

Big Screen Plaza

Pathway: Drawing In, On, and Through the Landscape

September 21–24, 2011

855 Sixth Avenue & 29th Street in New York City

Opening Reception: Wednesday, September 21, 7–9pm



Ann Carlson and Mary Ellen Strom, *Four Parallel Lines*, 2007, Still from video. Courtesy Alexander Gray Associates, New York, NY.

For further information and images please contact
Emily Gaynor *Public Relations and Marketing Officer*
212 219 2166 x119 | egaynor@drawingcenter.org

September 7, 2011

The Drawing Center and Big Screen Plaza present *Pathway: Drawing In, On, and Through the Landscape*. On view in the public plaza behind the Eventi Hotel at 855 Sixth Avenue from September 22–24 (11am–6pm), with an opening reception on Wednesday, September 21 (7–9pm), this program will investigate the medium of drawing through six short films shown in succession. In these animated and live action shorts, drawing takes place in diverse landscapes: urban and natural, as well as public and private.

While some films in this presentation use drawing as a means of recording the ever-changing landscape, others present creative responses to specific physical or environmental conditions. For example, in Ann Carlson and Mary Ellen Strom's *Four Parallel Lines*, three men at the border between the United States and Mexico draw lines in the sand to explore notions of national and territorial identity; Candida Richardson's *Underground Drawing* documents William Anastasi's one-hour ride on the London Tube as he transcribes the train's vibrations with pen on paper; and Terry Nauheim captures childlike drawings made by fingerprints on the inside of a fogged car window. In all instances, drawing serves as a means of connecting its practitioners to a dynamic world.

This project includes films by seven internationally recognized mid-career and emerging artists: Ann Carlson & Mary Ellen Strom, Mark Harris, Jessica Mein, Terry Nauheim, Candida Richardson, and Gosia Wlodarczak.

ABOUT THE ARTISTS

Ann Carlson (b. 1954, Evanston, IL), (*Four Parallel Lines*, 2007) received a B.F.A. from the University of Utah, Salt Lake City in 1976 and an M.S. from the University of Arizona, Tucson in 1983. She is the recipient of a three-year long choreographic fellowship from the National Endowment for the Arts in 1989 and a Guggenheim fellowship in choreography in 2003, among other awards. Carlson's work has been performed and exhibited at numerous institutions, including the Museum of Contemporary Art, Houston, TX (2011); the Institute of Contemporary Art, Boston, MA (2003); the Sculpture Center, Long Island City, NY (2007); Yerba Buena Center for the Arts, San Francisco, CA (2002); and the Kitchen, NY (2000). She lives and works in Palo Alto, CA; Boston, MA; and Basin, MT.

Mark Harris (b. 1954, Singapore), (*Video Drawing–Train*, 2003) is currently the Director of the School of Art at the University of Cincinnati, OH. He received an M.A. in painting from the Royal College of Art, London in 1982, an M.A. in continental philosophy from Warwick University, Coventry in 1997 and a Ph.D. in Philosophy from Goldsmiths College, London in 2006. Recent exhibitions of his work include the Wellcome Collection, London (2011); the Baltimore Contemporary Museum, MD (2011); and the Wexner Center for the Arts, Columbus, OH (2007). He lives and works in Cincinnati, OH.

Jessica Mein (b. 1975, Brazil) (*Billboard*, 2010) received a B.A. from Duke University, Durham, North Carolina in 1997 and an M.F.A. from Hunter College, New York in 2007. Mein's work has been exhibited internationally at venues including the Bertha Karl Leubsdorf Art Gallery at Hunter College, New York (2009); the Museum of Modern Art, New York (2008); and Museu de Arte Contemporânea Campinas, SP, Brazil (2001). She lives and works in New York and Dubai.

Terry Nauheim (b. 1970, Washington, D.C.), (*Car Drawing*, 2002) received an M.F.A. in mixed media/digital arts from the University of Maryland at 2001 and B.F.A. in painting at Washington University in St. Louis, Missouri in 1992 where she received a William Felt Drawing Award. Her work has been exhibited at the Art Institute of Pittsburgh, PA (2010); the Drawing Room, London (2005); the Bronx Museum of the Arts, NY (2003); Musée Art Contemporain Lyon (2002). She lives and works in Port Washington, NY.

Candida Richardson (b. 1970, London), (*Underground Drawing*, 2008) is a London-based cinematographer and filmmaker who studied film and photography at the Polytechnic of Central London in 1992. Richardson's films have been screened at the Redfern Gallery, London (2010)

and the London Architecture Biennale (2008). Her work in feature film includes, *Come On Eileen* (2009) directed by Finola Geraghty, shown at Dinard Film Festival 2010; *Ana Begins* (2007) directed by Ben O'Connor, shown at the Bergamo Festival Italy and Cabourg Film Festival, France; and *Private Life* (2006) directed by Abbe Robinson shown at Sundance Film Festival, Utah in 2007. She lives and works in London.

Mary Ellen Strom (b. 1955, Butte, Montana), (*Four Parallel Lines*, 2007) received an M.F.A. from the University of California, Irvine in 1998. Her work has been the focus of many solo exhibitions including the Decordova Museum, Lincoln, MA (2009); The Institute of Contemporary Art, Boston, MA (2003); The Yerba Buena Center for the Arts, San Francisco, CA (2002); and the Walker Art Center, Minneapolis, MN (2000). She lives and works in Boston, MA and Basin, MT.

Gosia Wlodarczak (b. 1959, Poland), (*The Train Trip*, 2010) received her M.F.A. from the Academy of Fine Arts, Poznan, Poland in 1984. Her work has been included in various solo and group exhibitions worldwide, most recently at 2011 Singapore Biennale; Fehily Contemporary, Melbourne, Australia (2011); Open Studio Greene Street, New York (2010); National Gallery of Australia, Canberra (2010); the Art Gallery of New South Wales, Sydney, Australia (2010); and the Museum of Contemporary Art, Sydney (2009). She lives and works in Australia.

HOURS

Opening Reception: Wednesday, September 21, 7–9pm

On View: Thursday-Saturday, September 22-24, 11am–6pm

CREDITS

The Drawing Center's 2011–2012 exhibitions and public programs are made possible, in part, with the generous support of Bloomberg Philanthropies, Horace W. Goldsmith Foundation, May and Samuel Rudin Family Foundation, The Brown Foundation Inc., of Houston, and with public funds from the New York State Council on the Arts, a State agency and New York City Department of Cultural Affairs.



Special thanks to Sigmund Pretzels and Kettle Corn NYC.



ABOUT THE DRAWING CENTER

The Drawing Center is the only not-for-profit fine arts institution in the country to focus solely on the exhibition of drawings, both historical and contemporary. It was established in 1977 to provide opportunities for emerging and under-recognized artists; to demonstrate the significance and diversity of drawings throughout history; and to stimulate public dialogue on issues of art and culture.

ABOUT THE BIG SCREEN PLAZA

Pulsing between 29th to 30th Streets at 6th Avenue, in the heart of Midtown Manhattan, the Big Screen Plaza's 30 x 16 foot HD-format LED screen is a new nexus of the city's cultural life.

Established in 2010, the 10,000-square-foot outdoor multimedia venue hosts major events and screenings of an eclectic mix, ranging from cinema to sports, from the arts to fashion. BSP has hosted major media events and has partnered with the Wine and Food Festival, The Brooklyn Academy of Music, the New Art Dealer's Alliance, the Streaming Museum, Leaders in Software and Art, Telegraph21 and more. The BSP is featuring Movie Nights with an array of classic films from all genres in an urban incarnation of the old drive-in. The Arts are well represented at the BSP, featuring the best works by video and animation artists. We also support New York arts schools by showcasing fine work by these emerging talents. To enhance this experience, visitors can enjoy the sumptuous offerings of the FoodParc, BeerParc, and the sophisticated atmosphere of Bar Basque. Big Screen Plaza's on-going aim is to serve as a nodal point for entertainment as well as cutting-edge cultural innovation coming out of New York and elsewhere.

Big Screen Plaza

Pathway: Drawing In, On, and Through the Landscape

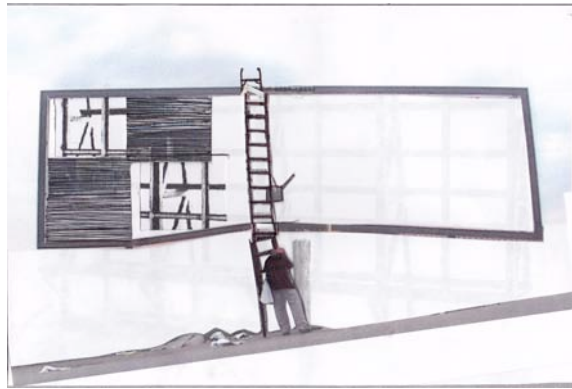
September 21–24, 2011

855 Sixth Avenue & 29th Street in New York City

Opening Reception: Wednesday, September 21, 7–9pm

Images Available for Reproduction

For further information and images, please contact
Emily Gaynor *Public Relations and Marketing Officer*
212 219 2166 x119 | egaynor@drawingcenter.org



Jessica Mein, *Billboard*, 2010, Still from video animation. Courtesy the artist and Simon Preston, New York.



Mark Harris, *Video Drawing–Train*, 2003, Still from single-channel video. Courtesy the artist.



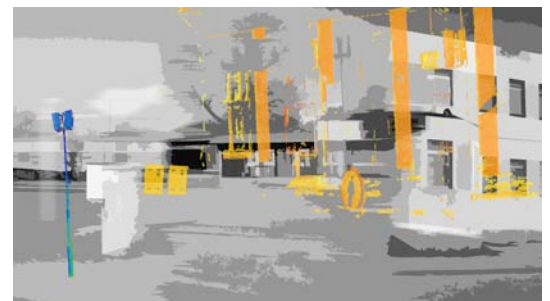
Candida Richardson, *Underground Drawing by William Anastasi*, 2008, Still from digital film. Courtesy the artist.



Terry Nauheim, *Car Drawing*, 2002, Still from digital film. Courtesy the artist.



Ann Carlson and Mary Ellen Strom, *Four Parallel Lines*, 2007, Still from video. Courtesy Alexander Gray Associates, New York, NY.



Gosia Włodarczak, *The Train Trip*, 2010, Panoramic still from animated film. Courtesy the artist and Fehily Contemporary, Melbourne.